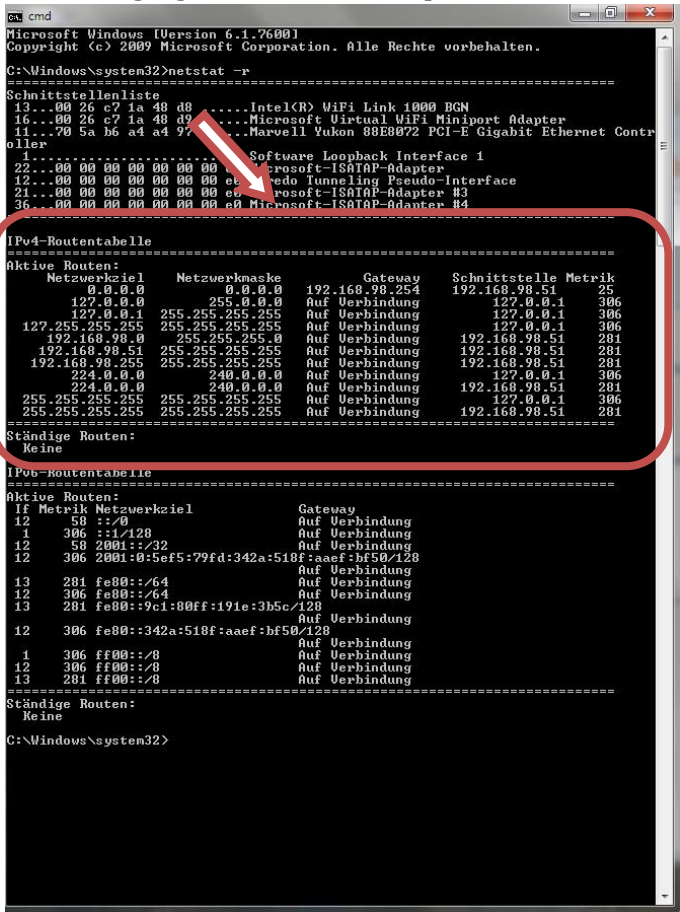
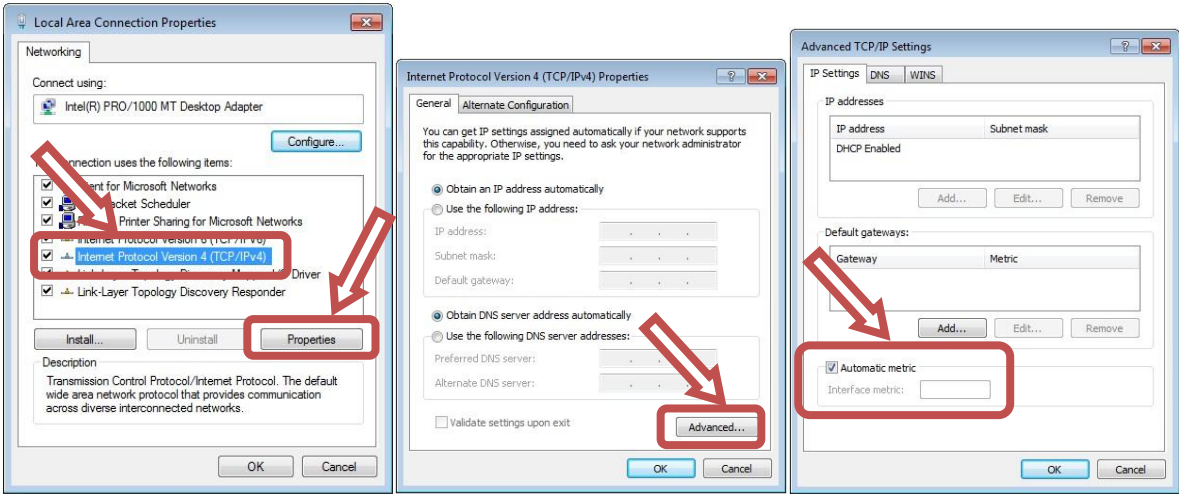


SEARCH FOR AS55X IN LAN – WINDOWS 7 / VISTA

The AS55X search function works with UDP broadcasts. Since Windows VISTA Microsoft changed the bearing of the LAN interfaces belonging to broadcasts. Up to Microsoft XP broadcasts sent to all interfaces. Now this broadcast is sent only to one interface. This can lead to complications if a second interface is active. If you start "cmd.exe" and run "netstat -r" command, the IPv4 routing table will be listed. You will find more than one entry for broadcast-aim 255.255.255.255. If the AS55X is not connected to the interface with the lowest metric, the messages will not reach the AS55X.



In this case, please disable the interfaces, which have a lower metric or change the metric of your interface manually. Therefore open your interface settings and set a lower metric. The metric is the result of a calculation in which the speed of the interface is included. So please set the value to a manual metric between 10 (greater than 200 Mbps) and 20 (80Mbps...200Mbps).



If it is not possible to change the metric, you have to change your IP settings. The factory default AS55X IP address is 192.168.0.2. If the AS55X is configured to another IP address, you have to use USB local access or reset the AS55X by using the reset button.